

CONTROL360°

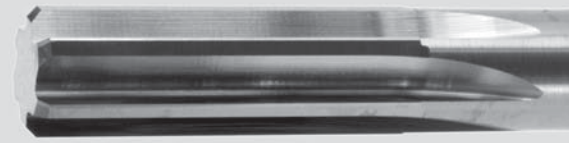
cutting tool technologies

REAMER360°



REAMER360⁰

cutting tool technologies



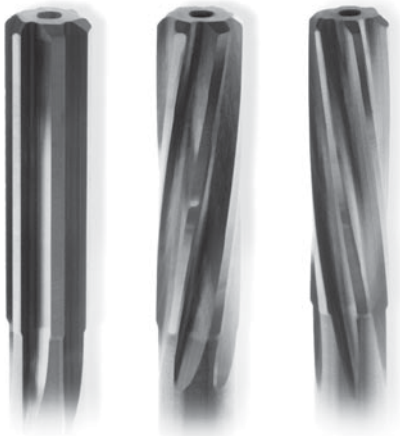
SOLID CARBIDE CHUCKING REAMERS

SERIES 250 STRAIGHT FLUTE/RHC

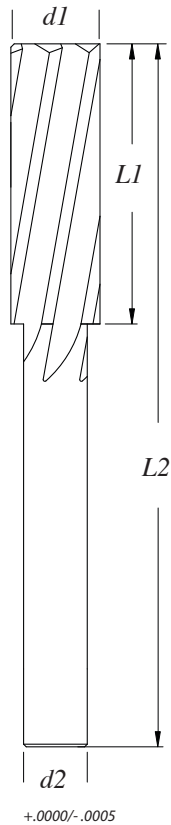
SERIES 260 RHS/RHC

SERIES 270 LHS/RHC

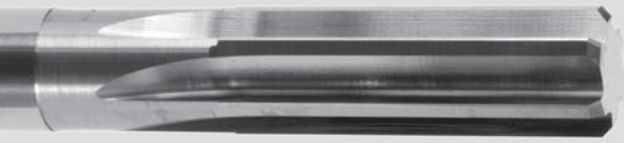
24-hour Service
Including Metric Sizes



$d1 .0351 - .250 : +.0002 / -.0000$
 $d1 .2501 - 1.025 : +.0003 / -.0000$



REAMER RANGE (d1)	LENGTH OF FLUTE (L1)	SHANK DIAMETER (d2)	OVERALL LENGTH (L2)	No. OF FLUTES
.0351-.040	0.250	0.030	1.500	4
.0401-.045	0.375	0.037	1.500	4
.0451-.050	0.375	0.042	1.500	4
.0501-.057	0.375	0.046	1.500	4
.0571-.065	0.375	0.053	1.500	4
.0651-.080	0.500	0.060	1.750	4
.0801-.095	0.500	0.075	2.000	4
.0951-.115	0.625	0.090	2.250	4
.1151-.130	0.625	0.110	2.250	4
.1301-.145	0.750	0.125	2.500	4
.1451-.160	0.750	0.140	2.500	4
.1601-.175	0.875	0.155	2.750	4
.1751-.195	0.875	0.170	2.750	4
.1951-.210	1.000	0.188	3.000	4
.2101-.225	1.000	0.205	3.000	4
.2251-.240	1.000	0.220	3.000	4
.2401-.255	1.000	0.235	3.000	4
.2551-.275	1.125	0.250	3.250	6
.2751-.295	1.125	0.270	3.250	6
.2951-.315	1.125	0.290	3.250	6
.3151-.335	1.250	0.313	3.500	6
.3351-.355	1.250	0.330	3.500	6
.3551-.380	1.250	0.350	3.500	6
.3801-.410	1.250	0.375	4.000	6
.4101-.440	1.375	0.405	4.000	6
.4401-.470	1.375	0.438	4.000	6
.4701-.505	1.500	0.465	4.000	6
.5051-.540	1.500	0.500	4.500	6
.5401-.580	1.500	0.535	4.500	6
.5801-.620	1.750	0.575	4.500	6
.6201-.660	1.750	0.615	4.500	6
.6601-.705	2.000	0.655	5.000	6
.7051-.755	2.000	0.700	5.000	6
.7551-.795	2.000	0.750	5.000	6
.7951-.845	2.250	0.750	5.000	6
.8451-.900	2.250	0.750	5.000	6
.9001-.960	2.250	0.875	5.000	8
.9601-1.025	2.250	0.875	5.000	8



REAMER360⁰

cutting tool technologies

SOLID CARBIDE LONG CHUCKING REAMERS

SERIES 450 - STRAIGHT FLUTE, RHC

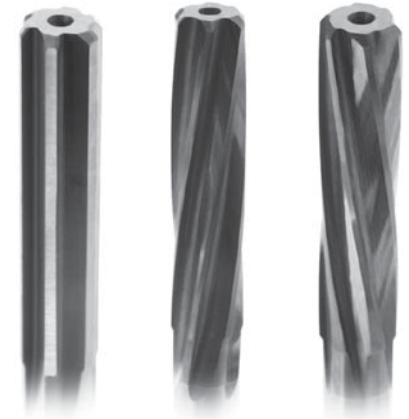
SERIES 460 - RHS/RHC

SERIES 470 - LHS/RHC

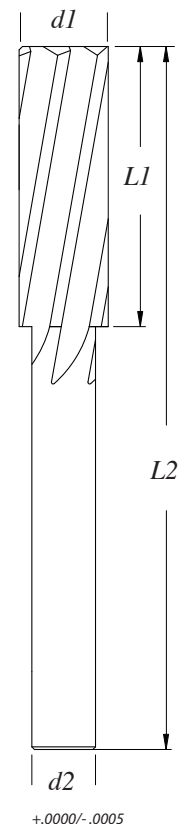
24-hour Service
Including Metric Sizes

Solid carbide for diameters up to .1950
Carbide head, steel shank for diameters .1951+

REAMER RANGE (d1)	LENGTH OF FLUTE (L1)	SHANK DIAMETER (d2)	OVERALL LENGTH (L2)	NO. OF FLUTES
.0501-.057	0.625	0.046	2.500	4
.0571-.065	0.625	0.053	2.500	4
.0651-.080	0.750	0.060	2.750	4
.0801-.095	0.750	0.075	3.000	4
.0951-.115	0.875	0.090	3.500	4
.1151-.130	0.875	0.110	3.500	4
.1301-.145	0.875	0.125	4.000	4
.1451-.160	1.000	0.140	4.000	4
.1601-.175	1.000	0.155	4.500	4
.1751-.195	1.125	0.170	4.500	4
.1951-.210	1.250	0.188	5.000	4
.2101-.225	1.250	0.205	5.000	4
.2251-.240	1.250	0.220	6.000	4
.2401-.255	1.250	0.235	6.000	6
.2551-.275	1.375	0.250	6.000	6
.2751-.295	1.375	0.270	6.000	6
.2951-.315	1.375	0.290	6.000	6
.3151-.335	1.500	0.313	6.000	6
.3351-.355	1.500	0.330	6.000	6
.3551-.380	1.500	0.350	7.000	6
.3801-.410	1.750	0.375	7.000	6
.4101-.440	1.750	0.405	7.000	6
.4401-.470	1.750	0.438	8.000	6
.4701-.505	1.750	0.465	8.000	6
.5051-.540	2.000	0.500	8.000	6
.5401-.580	2.000	0.535	8.000	6
.5801-.620	2.000	0.575	9.000	6
.6201-.660	2.000	0.615	9.000	6
.6601-.705	2.250	0.655	9.000	6
.7051-.755	2.250	0.700	9.500	6
.7551-.795	2.250	0.750	9.500	6
.7951-.845	2.500	0.750	9.500	6
.8451-.900	2.625	0.750	10.000	6
.9001-.960	2.625	0.875	10.000	8
.9601-1.025	2.750	0.875	10.000	8

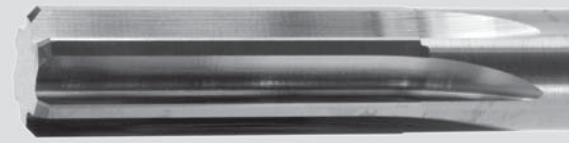


d1 .0351 - .250 : +.0002/-0.000
d1 .2501 - 1.025 : +.0003/-0.000



REAMER360^o

cutting tool technologies



SOLID CARBIDE SCREW MACHINE REAMERS

SERIES 350 STRAIGHT FLUTE/RHC

SERIES 360 RHS/RHC

SERIES 370 LHS/RHC

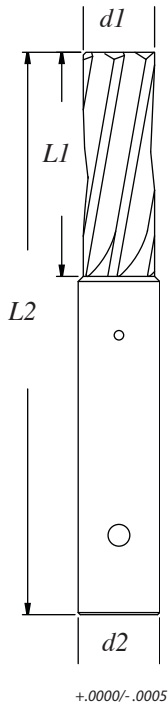
48-hour Service
Including Metric Sizes

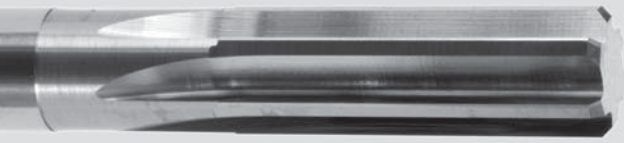
Supplied with carbide head,
steel shanks and pin holes



SIZE RANGE (d1)	SHANK DIAMETER (d2)	FLUTE LENGTH (L1)	OVERALL LENGTH (L2)	NO. OF FLUTES	PIN HOLE SIZE
.0600-.0700	1/8	1/2	1-3/4	4	1/16
.0701-.0950	1/8	1/2	1-3/4	4	1/16
.0951-.1150	1/4	3/4	2	4	3/32
.1151-.1300	1/4	3/4	2-1/4	4	3/32
.1301-.1600	1/4	7/8	2-1/4	4	3/32
.1601-.1900	1/4	7/8	2-1/4	4	3/32
.1901-.2200	3/8	7/8	2-3/8	4	1/8
.2201-.2550	3/8	7/8	2-3/8	4	1/8
.2551-.2850	3/8	1	2-1/2	6	1/8
.2851-.3200	3/8	1	2-1/2	6	1/8
.3201-.3500	1/2	1-1/4	2-11/16	6	1/2
.3501-.3800	1/2	1-1/4	1-11/16	6	1/2
.3801-.4100	1/2	1-1/8	2-11/16	6	3/16
.4101-.4400	1/2	1-1/8	2-11/16	6	3/16
.4401-.4750	5/8	1-3/8	2-11/16	6	1/4
.4751-.5100	5/8	1-3/8	2-11/16	6	1/4

d1 .0600 - .2550 : +.0002/-0.0000
d1 .2551 - .5100 : +.0003/-0.0000





REAMER360⁰

cutting tool technologies

SOLID CARBIDE TAPER PIN REAMERS

SERIES 374 STRAIGHT FLUTE

SERIES 375 LH SPIRAL

SERIES 376 LH FAST SPIRAL

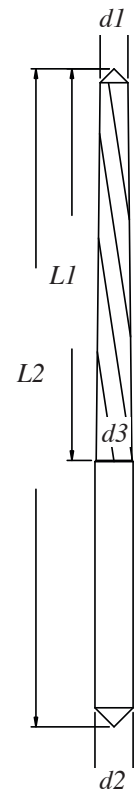
SERIES 374 & 375

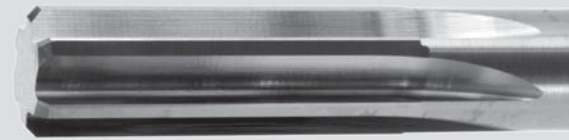
TAPER No.	DIAMETER LARGE END	DIAMETER SMALL END	No. OF FLUTES	FLUTE LENGTH	OVERALL LENGTH	SHANK DIAMETER
	<i>d3</i>	<i>d1</i>		<i>L1</i>	<i>L2</i>	<i>d2</i>
8/0	0.0540	0.0410	3	5/8	1-1/2	.0625
7/0	0.0666	0.0497	3	13/16	1-13/16	.0781
6/0	0.0806	0.0611	3	15/16	1-15/16	.0937
5/0	0.0966	0.0719	3	1-3/16	2-3/16	.1093
4/0	0.1142	0.0869	3	1-5/16	2-5/16	.1250
3/0	0.1302	0.1029	4	1-5/16	2-5/16	.1406
2/0	0.1462	0.1137	4	1-9/16	2-9/16	.1562
0	0.1638	0.1287	4	1-11/16	2-15/16	.1718
1	0.1798	0.1447	4	1-11/16	2-15/16	.1875
2	0.2008	0.1605	4	1-15/16	3-3/16	.2031
3	0.2294	0.1813	4	2-5/16	3-11/16	.2343
4	0.2604	0.2071	4	2-9/16	4-1/16	.2656



SERIES 376

TAPER No.	DIAMETER LARGE END	DIAMETER SMALL END	No. OF FLUTES	FLUTE LENGTH	OVERALL LENGTH	SHANK DIAMETER
	<i>d3</i>	<i>d1</i>		<i>L1</i>	<i>L2</i>	<i>d2</i>
8/0	0.0540	0.0410	2	5/8	1-1/2	.0625
7/0	0.0666	0.0497	2	13/16	1-13/16	.0781
6/0	0.0806	0.0611	2	15/16	1-15/16	.0937
5/0	0.0966	0.0719	2	1-3/16	2-3/16	.1093
4/0	0.1142	0.0869	2	1-5/16	2-5/16	.1250
3/0	0.1302	0.1029	2	1-5/16	2-5/16	.1406
2/0	0.1462	0.1137	2	1-9/16	2-9/16	.1562
0	0.1638	0.1287	2	1-11/16	2-15/16	.1718
1	0.1798	0.1447	3	1-11/16	2-15/16	.1875
2	0.2008	0.1605	3	1-15/16	3-3/16	.2031
3	0.2294	0.1813	3	2-5/16	3-11/16	.2343
4	0.2604	0.2071	3	2-9/16	4-1/16	.2656



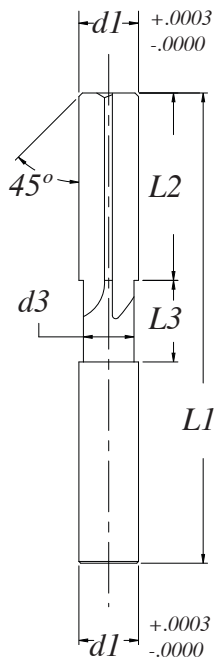


5250 SERIES SOLID CARBIDE REAMERS

Straight flute, RHC

All Series 5250 Reamers are supplied with standard 45 ° chamfer

Series 5250 includes number sizes, letter sizes, fractional sizes, metric sizes and decimal sizes, including over/under sizes

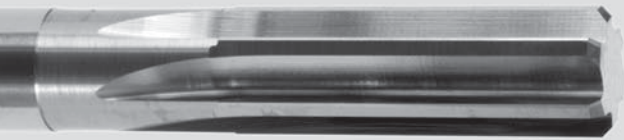


Neck Diameter
d1 .0400-.0500: *d3* .005 under *d1*
d1 .0510-.5020: *d3* .010 under *d1*

Neck Length
d1 .0400-.0670 – *L3* .250
d1 .0680-.0980 – *L3* .375
d1 .0990-.1590 – *L3* .500
d1 .1600-.2710 – *L3* .625
d1 .2720-.5020 – *L3* .750

Number of flutes
d1 .0400-.2540 - 4 flutes
d1 .2550-.5020 - 6 flutes

ORDER #	SIZE	SIZE	LENGTH OF FLUTE	OVER ALL LENGTH
	<i>d1</i>	<i>d1</i>	<i>L2</i>	<i>L1</i>
5250-0400	.0400	#60	.375	1.50
5250-0410	.0410	#59	.375	1.50
5250-0420	.0420	#58	.375	1.50
5250-0430	.0430	#57	.375	1.50
5250-0440	.0440		.375	1.50
5250-0450	.0450		.375	1.50
5250-0460	.0460		.375	1.50
5250-0465	.0465	#56	.375	1.50
5250-0469	.0469	3/64	.375	1.50
5250-0470	.0470		.375	1.50
5250-0480	.0480		.375	1.50
5250-0490	.0490		.375	1.50
5250-0492	.0492	1.25mm	.375	1.50
5250-0500	.0500		.375	1.50
5250-0510	.0510		.375	1.50
5250-0520	.0520	#55	.375	1.50
5250-0530	.0530		.375	1.50
5250-0540	.0540		.375	1.50
5250-0550	.0550	#54	.375	1.50
5250-0560	.0560		.375	1.50
5250-0570	.0570		.375	1.50
5250-0580	.0580		.375	1.50
5250-0591	.0591	1.5mm	.375	1.50
5250-0595	.0595	#53	.375	1.50
5250-0600	.0600		.375	1.50
5250-0605	.0605		.375	1.50
5250-0610	.0610	1.55mm	.375	1.50
5250-0615	.0615		.375	1.50
5250-0620	.0620		.375	1.50
5250-0625	.0625	1/16	.375	1.50
5250-0630	.0630	1.6mm	.375	1.50
5250-0635	.0635	#52	.375	1.50
5250-0640	.0640		.375	1.50
5250-0645	.0645		.375	1.50



REAMER360⁰

cutting tool technologies

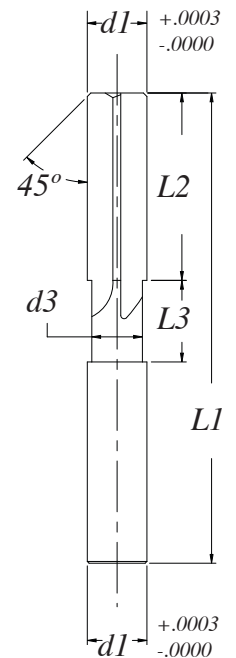
5250 SERIES SOLID CARBIDE REAMERS

Straight flute, RHC

All Series 5250 Reamers are supplied with standard 45 ° chamfer

Series 5250 includes number sizes, letter sizes, fractional sizes, metric sizes and decimal sizes, including over/under sizes

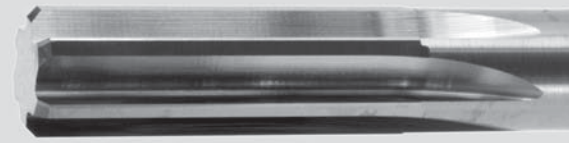
ORDER #	SIZE <i>d1</i>	SIZE <i>d1</i>	LENGTH OF FLUTE <i>L2</i>	OVER ALL LENGTH <i>L1</i>
5250-0650	.0650		.375	1.50
5250-0660	.0660		.375	1.50
5250-0670	.0670	#51	.375	1.50
5250-0680	.0680		.500	1.75
5250-0690	.0690		.500	1.75
5250-0700	.0700	#50	.500	1.75
5250-0710	.0710		.500	1.75
5250-0720	.0720		.500	1.75
5250-0730	.0730	#49	.500	1.75
5250-0740	.0740		.500	1.75
5250-0750	.0750		.500	1.75
5250-0760	.0760	#48	.500	1.75
5250-0770	.0770		.500	1.75
5250-0780	.0780		.500	1.75
5250-0781	.0781	5/64	.500	1.75
5250-0785	.0785	#47	.500	1.75
5250-0787	.0787	2.0mm	.500	1.75
5250-0790	.0790		.500	2.00
5250-0800	.0800		.500	2.00
5250-0810	.0810	#46	.500	2.00
5250-0820	.0820	#45	.500	2.00
5250-0830	.0830		.500	2.00
5250-0840	.0840		.500	2.00
5250-0850	.0850		.500	2.00
5250-0860	.0860	#44	.500	2.00
5250-0870	.0870		.500	2.00
5250-0880	.0880		.500	2.00
5250-0890	.0890	#43	.500	2.00
5250-0900	.0900		.500	2.00
5250-0910	.0910		.500	2.00
5250-0915	.0915		.500	2.00
5250-0920	.0920		.500	2.00
5250-0925	.0925		.500	2.00
5250-0930	.0930		.500	2.00



Neck Diameter
d1 .0400-.0500: *d3* .005 under *d1*
d1 .0510-.5020: *d3* .010 under *d1*

Neck Length
d1 .0400-.0670 – *L3* .250
d1 .0680-.0980 – *L3* .375
d1 .0990-.1590 – *L3* .500
d1 .1600-.2710 – *L3* .625
d1 .2720-.5020 – *L3* .750

Number of flutes
d1 .0400-.2540 - 4 flutes
d1 .2550-.5020 - 6 flutes

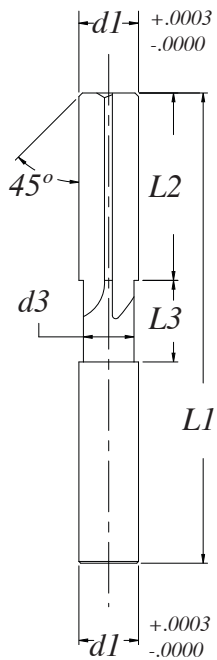


5250 SERIES SOLID CARBIDE REAMERS

Straight flute, RHC

All Series 5250 Reamers are supplied with standard 45 ° chamfer

Series 5250 includes number sizes, letter sizes, fractional sizes, metric sizes and decimal sizes, including over/under sizes

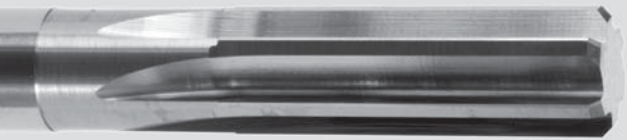


Neck Diameter
d1 .0400-.0500: *d3* .005 under *d1*
d1 .0510-.5020: *d3* .010 under *d1*

Neck Length
d1 .0400-.0670 - *L3* .250
d1 .0680-.0980 - *L3* .375
d1 .0990-.1590 - *L3* .500
d1 .1600-.2710 - *L3* .625
d1 .2720-.5020 - *L3* .750

Number of flutes
d1 .0400-.2540 - 4 flutes
d1 .2550-.5020 - 6 flutes

ORDER #	SIZE	SIZE	LENGTH OF FLUTE	OVER ALL LENGTH
	<i>d1</i>	<i>d1</i>	<i>L2</i>	<i>L1</i>
5250-0935	.0935	#42	.500	2.00
5250-0938	.0938	3/32	.500	2.00
5250-0940	.0940		.500	2.00
5250-0945	.0945	2.4mm	.500	2.00
5250-0950	.0950		.500	2.00
5250-0960	.0960	#41	.625	2.25
5250-0970	.0970		.625	2.25
5250-0980	.0980	#40	.625	2.25
5250-0984	.0984	2.5mm	.625	2.25
5250-0990	.0990		.625	2.25
5250-0995	.0995	#39	.625	2.25
5250-1000	.1000		.625	2.25
5250-1010	.1010		.625	2.25
5250-1015	.1015	#38	.625	2.25
5250-1020	.1020		.625	2.25
5250-1030	.1030		.625	2.25
5250-1040	.1040	#37	.625	2.25
5250-1050	.1050		.625	2.25
5250-1060	.1060		.625	2.25
5250-1065	.1065	#36	.625	2.25
5250-1070	.1070		.625	2.25
5250-1080	.1080		.625	2.25
5250-1090	.1090		.625	2.25
5250-1094	.1094	7/64	.625	2.25
5250-1100	.1100	#35	.625	2.25
5250-1110	.1110	#34	.625	2.25
5250-1120	.1120		.625	2.25
5250-1130	.1130	#33	.625	2.25
5250-1140	.1140		.625	2.25
5250-1150	.1150		.625	2.25
5250-1160	.1160	#32	.625	2.25
5250-1170	.1170		.625	2.25
5250-1180	.1180		.625	2.25
5250-1181	.1181	3.0mm	.625	2.25



REAMER360⁰

cutting tool technologies

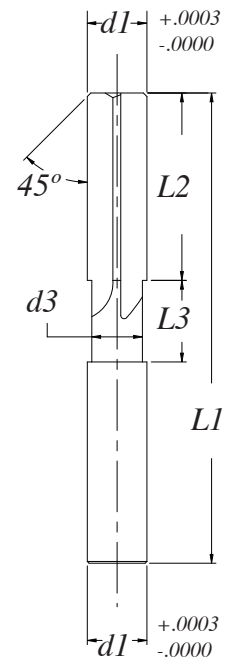
5250 SERIES SOLID CARBIDE REAMERS

Straight flute, RHC

All Series 5250 Reamers are supplied with standard 45 ° chamfer

Series 5250 includes number sizes, letter sizes, fractional sizes, metric sizes and decimal sizes, including over/under sizes

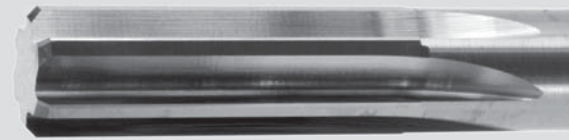
ORDER #	SIZE	SIZE	LENGTH OF FLUTE	OVER ALL LENGTH
	<i>d1</i>	<i>d1</i>	<i>L2</i>	<i>L1</i>
5250-1190	.1190		.625	2.25
5250-1200	.1200	#31	.625	2.25
5250-1210	.1210		.625	2.25
5250-1220	.1220	3.1mm	.625	2.25
5250-1230	.1230	D.P.	.625	2.25
5250-1235	.1235		.625	2.25
5250-1240	.1240	U.S.	.625	2.25
5250-1245	.1245		.625	2.25
5250-1247	.1247	D.P.	.625	2.25
5250-1250	.1250	1/8	.625	2.25
5250-1255	.1255		.625	2.25
5250-1260	.1260	O.S.	.625	2.25
5250-1265	.1265		.625	2.25
5250-1270	.1270		.625	2.25
5250-1275	.1275		.625	2.25
5250-1280	.1280	3.25mm	.625	2.25
5250-1285	.1285	#30	.625	2.25
5250-1290	.1290		.625	2.25
5250-1300	.1300		.750	2.50
5250-1310	.1310		.750	2.50
5250-1320	.1320		.750	2.50
5250-1330	.1330		.750	2.50
5250-1340	.1340		.750	2.50
5250-1350	.1350		.750	2.50
5250-1360	.1360	#29	.750	2.50
5250-1370	.1370		.750	2.50
5250-1378	.1378	3.5mm	.750	2.50
5250-1380	.1380		.750	2.50
5250-1390	.1390		.750	2.50
5250-1400	.1400		.750	2.50
5250-1405	.1405	#28	.750	2.50
5250-1406	.1406	9/64	.750	2.50
5250-1410	.1410		.750	2.50
5250-1420	.1420		.750	2.50



Neck Diameter
d1 .0400-.0500: *d3* .005 under *d1*
d1 .0510-.5020: *d3* .010 under *d1*

Neck Length
d1 .0400-.0670 – *L3* .250
d1 .0680-.0980 – *L3* .375
d1 .0990-.1590 – *L3* .500
d1 .1600-.2710 – *L3* .625
d1 .2720-.5020 – *L3* .750

Number of flutes
d1 .0400-.2540 - 4 flutes
d1 .2550-.5020 - 6 flutes

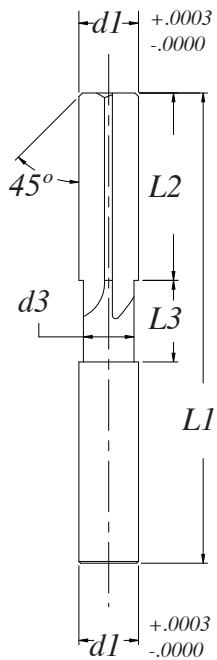


5250 SERIES SOLID CARBIDE REAMERS

Straight flute, RHC

All Series 5250 Reamers are supplied with standard 45 ° chamfer

Series 5250 includes number sizes, letter sizes, fractional sizes, metric sizes and decimal sizes, including over/under sizes

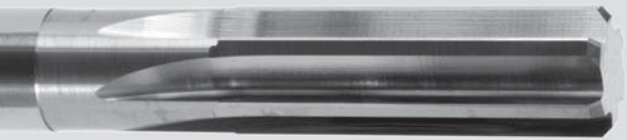


Neck Diameter
d1 .0400-.0500: *d3* .005 under *d1*
d1 .0510-.5020: *d3* .010 under *d1*

Neck Length
d1 .0400-.0670 – *L3* .250
d1 .0680-.0980 – *L3* .375
d1 .0990-.1590 – *L3* .500
d1 .1600-.2710 – *L3* .625
d1 .2720-.5020 – *L3* .750

Number of flutes
d1 .0400-.2540 - 4 flutes
d1 .2550-.5020 - 6 flutes

ORDER #	SIZE	SIZE	LENGTH OF FLUTE	OVER ALL LENGTH
	<i>d1</i>	<i>d1</i>	<i>L2</i>	<i>L1</i>
5250-1430	.1430		.750	2.50
5250-1440	.1440	#27	.750	2.50
5250-1450	.1450		.750	2.50
5250-1460	.1460		.750	2.50
5250-1470	.1470	#26	.750	2.50
5250-1480	.1480		.750	2.50
5250-1490	.1490		.750	2.50
5250-1495	.1495	#25	.750	2.50
5250-1500	.1500		.750	2.50
5250-1510	.1510		.750	2.50
5250-1520	.1520	#24	.750	2.50
5250-1530	.1530		.750	2.50
5250-1540	.1540	#23	.750	2.50
5250-1545	.1545		.750	2.50
5250-1550	.1550		.750	2.50
5250-1555	.1555	3.95mm	.750	2.50
5250-1560	.1560		.750	2.50
5250-1562	.1562	5/32	.750	2.50
5250-1565	.1565		.750	2.50
5250-1570	.1570	#22	.750	2.50
5250-1575	.1575	4.0mm	.750	2.50
5250-1580	.1580		.750	2.50
5250-1590	.1590	#21	.750	2.50
5250-1600	.1600		.875	2.50
5250-1610	.1610	#20	.875	2.50
5250-1620	.1620		.875	2.75
5250-1630	.1630		.875	2.75
5250-1640	.1640		.875	2.75
5250-1650	.1650		.875	2.75
5250-1660	.1660	#19	.875	2.75
5250-1670	.1670		.875	2.75
5250-1680	.1680		.875	2.75
5250-1690	.1690		.875	2.75
5250-1695	.1695	#18	.875	2.75



REAMER360⁰

cutting tool technologies

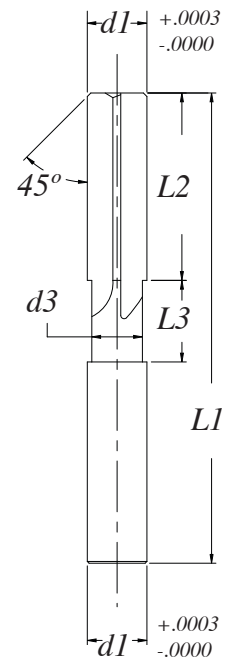
5250 SERIES SOLID CARBIDE REAMERS

Straight flute, RHC

All Series 5250 Reamers are supplied with standard 45 ° chamfer

Series 5250 includes number sizes, letter sizes, fractional sizes, metric sizes and decimal sizes, including over/under sizes

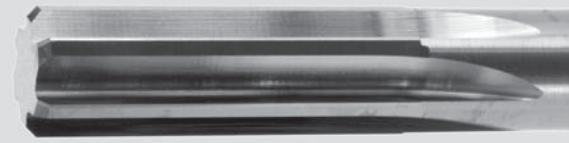
ORDER #	SIZE <i>d1</i>	SIZE <i>d1</i>	LENGTH OF FLUTE <i>L2</i>	OVER ALL LENGTH <i>L1</i>
5250-1700	.1700		.875	2.75
5250-1710	.1710		.875	2.75
5250-1719	.1719	11/64	.875	2.75
5250-1720	.1720		.875	2.75
5250-1730	.1730	#17	.875	2.75
5250-1740	.1740		.875	2.75
5250-1750	.1750		.875	2.75
5250-1760	.1760		.875	2.75
5250-1770	.1770	#16	.875	2.75
5250-1772	.1772	4.5mm	.875	2.75
5250-1780	.1780		.875	2.75
5250-1790	.1790		.875	2.75
5250-1800	.1800	#15	.875	2.75
5250-1810	.1810		.875	2.75
5250-1820	.1820	#14	.875	2.75
5250-1830	.1830		.875	2.75
5250-1840	.1840		.875	2.75
5250-1850	.1850	#13	.875	2.75
5250-1855	.1855	D.P.	.875	2.75
5250-1860	.1860		.875	2.75
5250-1865	.1865	U.S.	.875	2.75
5250-1870	.1870	D.P.	.875	2.75
5250-1875	.1875	3/16	.875	2.75
5250-1880	.1880		.875	2.75
5250-1885	.1885	O.S.	.875	2.75
5250-1890	.1890	#12	.875	2.75
5250-1900	.1900		.875	2.75
5250-1910	.1910	#11	.875	2.75
5250-1920	.1920		1.000	3.00
5250-1930	.1930		1.000	3.00
5250-1935	.1935	#10	1.000	3.00
5250-1940	.1940		1.000	3.00
5250-1950	.1950		1.000	3.00
5250-1960	.1960	#9	1.000	3.00



Neck Diameter
d1 .0400-.0500: *d3* .005 under *d1*
d1 .0510-.5020: *d3* .010 under *d1*

Neck Length
d1 .0400-.0670 – *L3* .250
d1 .0680-.0980 – *L3* .375
d1 .0990-.1590 – *L3* .500
d1 .1600-.2710 – *L3* .625
d1 .2720-.5020 – *L3* .750

Number of flutes
d1 .0400-.2540 - 4 flutes
d1 .2550-.5020 - 6 flutes

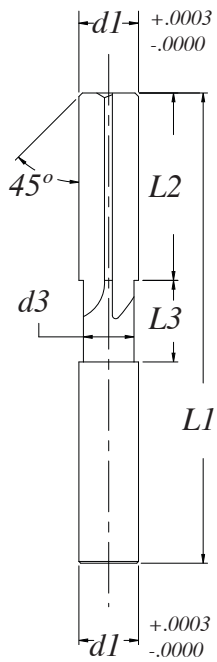


5250 SERIES SOLID CARBIDE REAMERS

Straight flute, RHC

All Series 5250 Reamers are supplied with standard 45 ° chamfer

Series 5250 includes number sizes, letter sizes, fractional sizes, metric sizes and decimal sizes, including over/under sizes

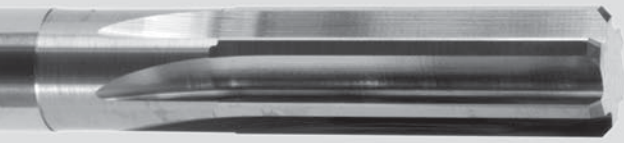


Neck Diameter
d1 .0400-.0500: *d3* .005 under *d1*
d1 .0510-.5020: *d3* .010 under *d1*

Neck Length
d1 .0400-.0670 – *L3* .250
d1 .0680-.0980 – *L3* .375
d1 .0990-.1590 – *L3* .500
d1 .1600-.2710 – *L3* .625
d1 .2720-.5020 – *L3* .750

Number of flutes
d1 .0400-.2540 - 4 flutes
d1 .2550-.5020 - 6 flutes

ORDER #	SIZE	SIZE	LENGTH OF FLUTE	OVER ALL LENGTH
	<i>d1</i>	<i>d1</i>	<i>L2</i>	<i>L1</i>
5250-1969	.1969	5.0mm	1.000	3.00
5250-1970	.1970		1.000	3.00
5250-1980	.1980		1.000	3.00
5250-1990	.1990	#8	1.000	3.00
5250-2000	.2000		1.000	3.00
5250-2010	.2010	#7	1.000	3.00
5250-2020	.2020		1.000	3.00
5250-2030	.2030		1.000	3.00
5250-2031	.2031	13/64	1.000	3.00
5250-2040	.2040	#6	1.000	3.00
5250-2050	.2050		1.000	3.00
5250-2055	.2055	#5	1.000	3.00
5250-2060	.2060		1.000	3.00
5250-2070	.2070		1.000	3.00
5250-2080	.2080		1.000	3.00
5250-2090	.2090	#4	1.000	3.00
5250-2100	.2100		1.000	3.00
5250-2110	.2110		1.000	3.00
5250-2120	.2120		1.000	3.00
5250-2130	.2130	#3	1.000	3.00
5250-2140	.2140		1.000	3.00
5250-2150	.2150		1.000	3.00
5250-2160	.2160		1.000	3.00
5250-2165	.2165	5.5mm	1.000	3.00
5250-2170	.2170		1.000	3.00
5250-2180	.2180		1.000	3.00
5250-2188	.2188	7/32	1.000	3.00
5250-2190	.2190		1.000	3.00
5250-2200	.2200		1.000	3.00
5250-2210	.2210	#2	1.000	3.00
5250-2220	.2220		1.000	3.00
5250-2230	.2230		1.000	3.00
5250-2240	.2240		1.000	3.00
5250-2250	.2250		1.000	3.00



REAMER360⁰

cutting tool technologies

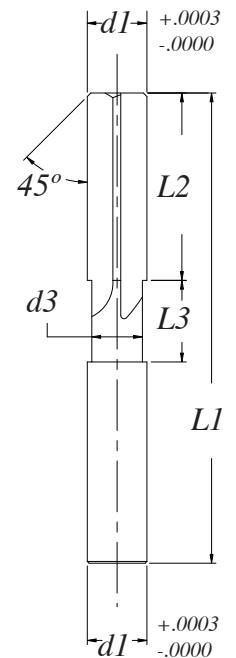
5250 SERIES SOLID CARBIDE REAMERS

Straight flute, RHC

All Series 5250 Reamers are supplied with standard 45 ° chamfer

Series 5250 includes number sizes, letter sizes, fractional sizes, metric sizes and decimal sizes, including over/under sizes

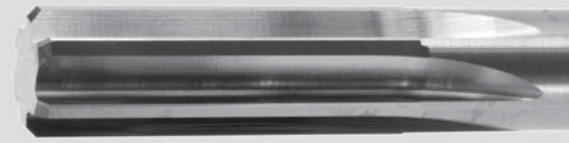
ORDER #	SIZE	SIZE	LENGTH OF FLUTE	OVER ALL LENGTH
	<i>d1</i>	<i>d1</i>	<i>L2</i>	<i>L1</i>
5250-2260	.2260		1.375	4.00
5250-2270	.2270		1.375	4.00
5250-2280	.2280	#1	1.000	3.00
5250-2290	.2290		1.000	3.00
5250-2300	.2300		1.000	3.00
5250-2310	.2310		1.000	3.00
5250-2320	.2320		1.000	3.00
5250-2330	.2330		1.000	3.00
5250-2340	.2340	A	1.000	3.00
5250-2344	.2344	15/64	1.000	3.00
5250-2350	.2350		1.000	3.00
5250-2360	.2360		1.000	3.00
5250-2362	.2362	6.0mm	1.000	3.00
5250-2370	.2370		1.000	3.00
5250-2380	.2380	B	1.000	3.00
5250-2390	.2390		1.000	3.00
5250-2400	.2400		1.000	3.00
5250-2410	.2410		1.000	3.00
5250-2420	.2420	C	1.000	3.00
5250-2430	.2430		1.000	3.00
5250-2440	.2440		1.000	3.00
5250-2450	.2450		1.000	3.00
5250-2460	.2460	D	1.000	3.00
5250-2470	.2470		1.000	3.00
5250-2480	.2480	D.P.	1.000	3.00
5250-2485	.2485		1.000	3.00
5250-2490	.2490	U.S.	1.000	3.00
5250-2495	.2495	D.P.	1.000	3.00
5250-2500	.2500	1/4,E	1.000	3.00
5250-2505	.2505		1.000	3.00
5250-2510	.2510	O.S.	1.000	3.00
5250-2515	.2515		1.000	3.00
5250-2520	.2520		1.000	3.00
5250-2530	.2530		1.000	3.00



Neck Diameter
d1 .0400-.0500: *d3* .005 under *d1*
d1 .0510-.5020: *d3* .010 under *d1*

Neck Length
d1 .0400-.0670 – *L3* .250
d1 .0680-.0980 – *L3* .375
d1 .0990-.1590 – *L3* .500
d1 .1600-.2710 – *L3* .625
d1 .2720-.5020 – *L3* .750

Number of flutes
d1 .0400-.2540 - 4 flutes
d1 .2550-.5020 - 6 flutes

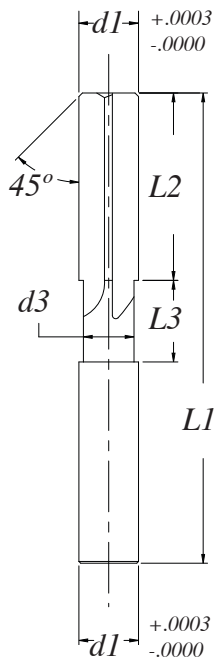


5250 SERIES SOLID CARBIDE REAMERS

Straight flute, RHC

All Series 5250 Reamers are supplied with standard 45 ° chamfer

Series 5250 includes number sizes, letter sizes, fractional sizes, metric sizes and decimal sizes, including over/under sizes

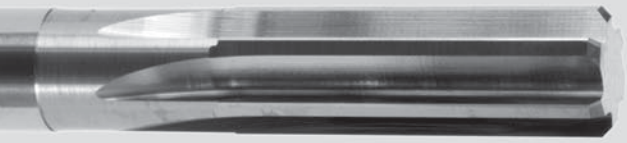


Neck Diameter
d1 .0400-.0500: *d3* .005 under *d1*
d1 .0510-.5020: *d3* .010 under *d1*

Neck Length
d1 .0400-.0670 – *L3* .250
d1 .0680-.0980 – *L3* .375
d1 .0990-.1590 – *L3* .500
d1 .1600-.2710 – *L3* .625
d1 .2720-.5020 – *L3* .750

Number of flutes
d1 .0400-.2540 - 4 flutes
d1 .2550-.5020 - 6 flutes

ORDER #	SIZE	SIZE	LENGTH OF FLUTE	OVER ALL LENGTH
	<i>d1</i>	<i>d1</i>	<i>L2</i>	<i>L1</i>
5250-2540	.2540		1.000	3.00
5250-2550	.2550		1.000	3.00
5250-2559	.2559	6.5mm	1.000	3.00
5250-2560	.2560		1.000	3.00
5250-2570	.2570	F	1.000	3.00
5250-2580	.2580		1.000	3.00
5250-2590	.2590		1.000	3.00
5250-2600	.2600		1.000	3.00
5250-2610	.2610	G	1.000	3.00
5250-2620	.2620		1.000	3.00
5250-2630	.2630		1.000	3.00
5250-2640	.2640		1.000	3.00
5250-2650	.2650		1.000	3.00
5250-2656	.2656	17/64	1.000	3.00
5250-2660	.2660	H	1.000	3.00
5250-2670	.2670		1.125	3.25
5250-2680	.2680		1.125	3.25
5250-2690	.2690		1.125	3.25
5250-2700	.2700		1.125	3.25
5250-2710	.2710		1.125	3.25
5250-2720	.2720	I	1.125	3.25
5250-2730	.2730		1.125	3.25
5250-2740	.2740		1.125	3.25
5250-2750	.2750		1.125	3.25
5250-2756	.2756	7.0mm	1.125	3.25
5250-2760	.2760		1.125	3.25
5250-2770	.2770	J	1.125	3.25
5250-2780	.2780		1.125	3.25
5250-2790	.2790		1.125	3.25
5250-2800	.2800		1.125	3.25
5250-2810	.2810	K	1.125	3.25
5250-2812	.2812	9/32	1.125	3.25
5250-2820	.2820		1.125	3.25
5250-2830	.2830		1.125	3.25



REAMER360⁰

cutting tool technologies

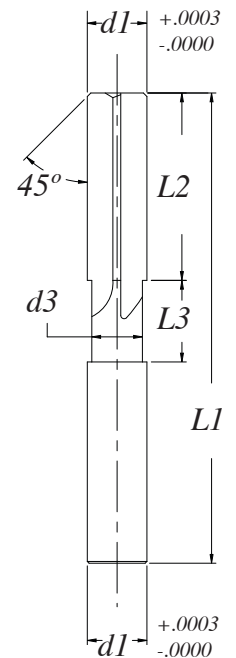
5250 SERIES SOLID CARBIDE REAMERS

Straight flute, RHC

All Series 5250 Reamers are supplied with standard 45 ° chamfer

Series 5250 includes number sizes, letter sizes, fractional sizes, metric sizes and decimal sizes, including over/under sizes

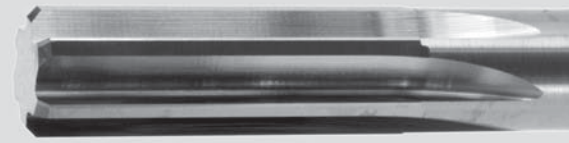
ORDER #	SIZE	SIZE	LENGTH OF FLUTE	OVER ALL LENGTH
	<i>d1</i>	<i>d1</i>	<i>L2</i>	<i>L1</i>
5250-2840	.2840		1.125	3.25
5250-2850	.2850		1.125	3.25
5250-2860	.2860		1.125	3.25
5250-2870	.2870		1.125	3.25
5250-2880	.2880		1.125	3.25
5250-2890	.2890		1.125	3.25
5250-2900	.2900	L	1.125	3.25
5250-2910	.2910		1.125	3.25
5250-2920	.2920		1.125	3.25
5250-2930	.2930		1.125	3.25
5250-2940	.2940		1.125	3.25
5250-2950	.2950	M	1.125	3.25
5250-2953	.2953	7.5mm	1.125	3.25
5250-2960	.2960		1.125	3.25
5250-2969	.2969	19/64	1.125	3.25
5250-2970	.2970		1.125	3.25
5250-2980	.2980		1.125	3.25
5250-2990	.2990		1.125	3.25
5250-3000	.3000		1.125	3.25
5250-3010	.3010		1.125	3.25
5250-3020	.3020	N	1.125	3.25
5250-3030	.3030		1.125	3.25
5250-3040	.3040		1.125	3.25
5250-3050	.3050		1.125	3.25
5250-3060	.3060		1.125	3.25
5250-3070	.3070		1.125	3.25
5250-3080	.3080		1.125	3.25
5250-3090	.3090		1.125	3.25
5250-3100	.3100		1.125	3.25
5250-3105	.3105	D.P.	1.125	3.25
5250-3110	.3110		1.125	3.25
5250-3115	.3115	U.S.	1.125	3.25
5250-3120	.3120	D.P.	1.125	3.25
5250-3125	.3125	5/16	1.125	3.25



Neck Diameter
d1 .0400-.0500: *d3* .005 under *d1*
d1 .0510-.5020: *d3* .010 under *d1*

Neck Length
d1 .0400-.0670 – *L3* .250
d1 .0680-.0980 – *L3* .375
d1 .0990-.1590 – *L3* .500
d1 .1600-.2710 – *L3* .625
d1 .2720-.5020 – *L3* .750

Number of flutes
d1 .0400-.2540 - 4 flutes
d1 .2550-.5020 - 6 flutes

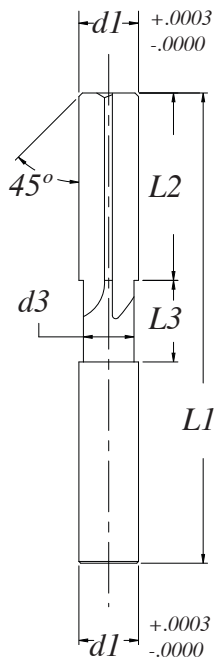


5250 SERIES SOLID CARBIDE REAMERS

Straight flute, RHC

All Series 5250 Reamers are supplied with standard 45 ° chamfer

Series 5250 includes number sizes, letter sizes, fractional sizes, metric sizes and decimal sizes, including over/under sizes

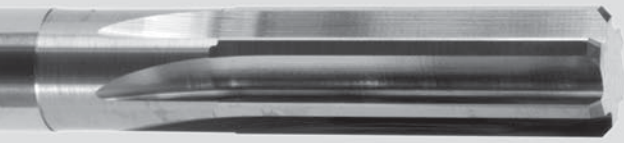


Neck Diameter
d1 .0400-.0500: *d3* .005 under *d1*
d1 .0510-.5020: *d3* .010 under *d1*

Neck Length
d1 .0400-.0670 – *L3* .250
d1 .0680-.0980 – *L3* .375
d1 .0990-.1590 – *L3* .500
d1 .1600-.2710 – *L3* .625
d1 .2720-.5020 – *L3* .750

Number of flutes
d1 .0400-.2540 - 4 flutes
d1 .2550-.5020 - 6 flutes

ORDER #	SIZE	SIZE	LENGTH OF FLUTE	OVER ALL LENGTH
	<i>d1</i>	<i>d1</i>	<i>L2</i>	<i>L1</i>
5250-3130	.3130		1.125	3.25
5250-3135	.3135	O.S.	1.125	3.25
5250-3140	.3140		1.125	3.25
5250-3150	.3150	8.0mm	1.125	3.25
5250-3160	.3160	O	1.125	3.25
5250-3170	.3170		1.125	3.25
5250-3180	.3180		1.125	3.25
5250-3190	.3190		1.125	3.25
5250-3200	.3200		1.125	3.25
5250-3210	.3210		1.125	3.25
5250-3220	.3220		1.125	3.25
5250-3230	.3230	P	1.125	3.25
5250-3240	.3240		1.125	3.25
5250-3250	.3250		1.125	3.25
5250-3260	.3260		1.125	3.25
5250-3270	.3270		1.125	3.25
5250-3280	.3280		1.125	3.25
5250-3281	.3281	21/64	1.125	3.25
5250-3290	.3290		1.125	3.25
5250-3300	.3300		1.125	3.25
5250-3310	.3310		1.125	3.25
5250-3320	.3320	Q	1.125	3.25
5250-3330	.3330		1.125	3.25
5250-3340	.3340		1.125	3.25
5250-3346	.3346	8.5mm	1.125	3.25
5250-3350	.3350		1.125	3.25
5250-3360	.3360		1.125	3.25
5250-3370	.3370		1.125	3.25
5250-3380	.3380		1.125	3.25
5250-3390	.3390	R	1.125	3.25
5250-3400	.3400		1.125	3.25
5250-3410	.3410		1.125	3.25
5250-3420	.3420		1.125	3.25
5250-3430	.3430		1.125	3.25



REAMER360⁰

cutting tool technologies

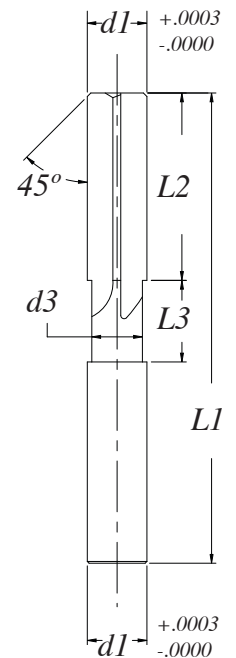
5250 SERIES SOLID CARBIDE REAMERS

Straight flute, RHC

All Series 5250 Reamers are supplied with standard 45 ° chamfer

Series 5250 includes number sizes, letter sizes, fractional sizes, metric sizes and decimal sizes, including over/under sizes

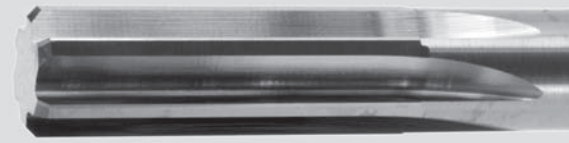
ORDER #	SIZE <i>d1</i>	SIZE <i>d1</i>	LENGTH OF FLUTE <i>L2</i>	OVER ALL LENGTH <i>L1</i>
5250-3438	.3438	11/32	1.250	3.50
5250-3440	.3440		1.250	3.50
5250-3450	.3450		1.250	3.50
5250-3460	.3460		1.250	3.50
5250-3470	.3470		1.250	3.50
5250-3480	.3480	S	1.250	3.50
5250-3490	.3490		1.250	3.50
5250-3500	.3500		1.250	3.50
5250-3510	.3510		1.250	3.50
5250-3520	.3520		1.250	3.50
5250-3530	.3530		1.250	3.50
5250-3540	.3540		1.250	3.50
5250-3543	.3543	9.0mm	1.250	3.50
5250-3550	.3550		1.250	3.50
5250-3560	.3560		1.250	3.50
5250-3570	.3570		1.250	3.50
5250-3580	.3580	T	1.250	3.50
5250-3590	.3590		1.250	3.50
5250-3594	.3594	23/64	1.250	3.50
5250-3600	.3600		1.250	3.50
5250-3610	.3610		1.250	3.50
5250-3620	.3620		1.250	3.50
5250-3630	.3630		1.250	3.50
5250-3640	.3640		1.250	3.50
-3650 5250	.3650		1.250	3.50
5250-3660	.3660		1.250	3.50
5250-3670	.3670		1.250	3.50
5250-3680	.3680	U	1.250	3.50
5250-3690	.3690		1.250	3.50
5250-3700	.3700		1.250	3.50
5250-3710	.3710		1.250	3.50
5250-3720	.3720		1.250	3.50
5250-3730	.3730	D.P.	1.250	3.50
5250-3740	.3740	9.5mm	1.250	3.50



Neck Diameter
d1 .0400-.0500: *d3* .005 under *d1*
d1 .0510-.5020: *d3* .010 under *d1*

Neck Length
d1 .0400-.0670 – *L3* .250
d1 .0680-.0980 – *L3* .375
d1 .0990-.1590 – *L3* .500
d1 .1600-.2710 – *L3* .625
d1 .2720-.5020 – *L3* .750

Number of flutes
d1 .0400-.2540 - 4 flutes
d1 .2550-.5020 - 6 flutes

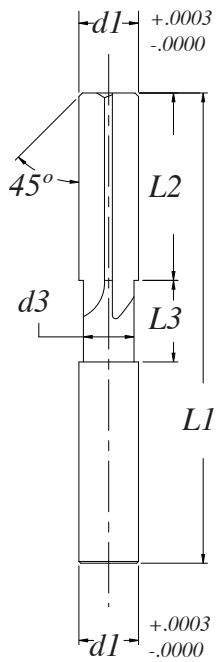


5250 SERIES SOLID CARBIDE REAMERS

Straight flute, RHC

All Series 5250 Reamers are supplied with standard 45 ° chamfer

Series 5250 includes number sizes, letter sizes, fractional sizes, metric sizes and decimal sizes, including over/under sizes

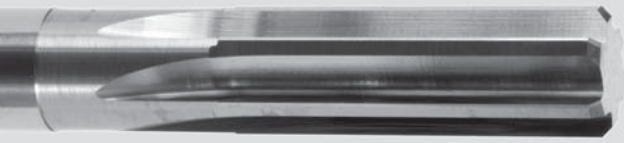


Neck Diameter
d1 .0400-.0500: *d3* .005 under *d1*
d1 .0510-.5020: *d3* .010 under *d1*

Neck Length
d1 .0400-.0670 – *L3* .250
d1 .0680-.0980 – *L3* .375
d1 .0990-.1590 – *L3* .500
d1 .1600-.2710 – *L3* .625
d1 .2720-.5020 – *L3* .750

Number of flutes
d1 .0400-.2540 - 4 flutes
d1 .2550-.5020 - 6 flutes

ORDER #	SIZE	SIZE	LENGTH OF FLUTE	OVER ALL LENGTH
	<i>d1</i>	<i>d1</i>	<i>L2</i>	<i>L1</i>
5250-3745	.3745	D.P.	1.250	3.50
5250-3750	.3750	3/8	1.250	3.50
5250-3755	.3755		1.250	3.50
5250-3760	.3760	O.S.	1.250	3.50
5250-3765	.3765		1.250	3.50
5250-3770	.3770	V	1.250	3.50
5250-3780	.3780		1.250	3.50
5250-3790	.3790		1.250	3.50
5250-3800	.3800		1.250	3.50
5250-3810	.3810		1.250	3.50
5250-3820	.3820		1.250	3.50
5250-3830	.3830		1.250	3.50
5250-3840	.3840		1.250	3.50
5250-3850	.3850		1.250	3.50
5250-3860	.3860	W	1.250	3.50
5250-3870	.3870		1.250	3.50
5250-3880	.3880		1.250	3.50
5250-3890	.3890		1.250	3.50
5250-3900	.3900		1.250	3.50
5250-3906	.3906	25/64	1.250	3.50
5250-3910	.3910		1.250	3.50
5250-3920	.3920		1.250	3.50
5250-3930	.3930		1.250	3.50
5250-3937	.3937	10.0mm	1.250	3.50
5250-3940	.3940		1.250	3.50
5250-3950	.3950		1.250	3.50
5250-3960	.3960		1.250	3.50
5250-3970	.3970	X	1.250	3.50
5250-3980	.3980		1.250	3.50
5250-3990	.3990		1.250	3.50
5250-4000	.4000		1.250	3.50
5250-4010	.4010		1.375	4.00
5250-4020	.4020		1.375	4.00
5250-4030	.4030		1.375	4.00



REAMER360⁰

cutting tool technologies

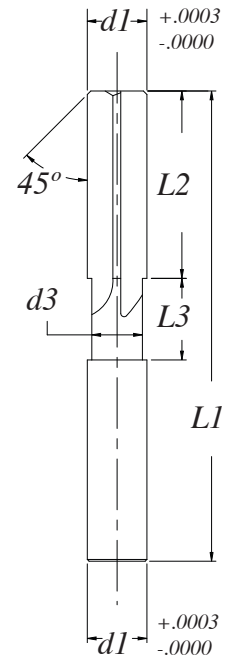
5250 SERIES SOLID CARBIDE REAMERS

Straight flute, RHC

All Series 5250 Reamers are supplied with standard 45° chamfer

Series 5250 includes number sizes, letter sizes, fractional sizes, metric sizes and decimal sizes, including over/under sizes

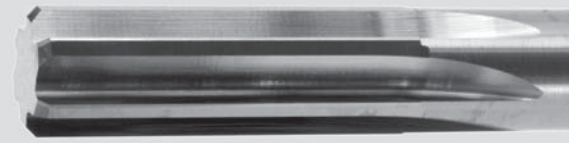
ORDER #	SIZE	SIZE	LENGTH OF FLUTE	OVER ALL LENGTH
	<i>d1</i>	<i>d1</i>	<i>L2</i>	<i>L1</i>
5250-4040	.4040	Y	1.375	4.00
5250-4050	.4050		1.375	4.00
5250-4060	.4060		1.375	4.00
5250-4062	.4062	13/32	1.375	4.00
5250-4070	.4070		1.375	4.00
5250-4080	.4080		1.375	4.00
5250-4090	.4090		1.375	4.00
5250-4100	.4100		1.375	4.00
5250-4110	.4110		1.375	4.00
5250-4120	.4120		1.375	4.00
5250-4130	.4130	Z	1.375	4.00
5250-4134	.4134	10.5mm	1.375	4.00
5250-4140	.4140		1.375	4.00
5250-4150	.4150		1.375	4.00
5250-4160	.4160		1.375	4.00
5250-4170	.4170		1.375	4.00
5250-4180	.4180		1.375	4.00
5250-4190	.4190		1.375	4.00
5250-4200	.4200		1.375	4.00
5250-4210	.4210		1.375	4.00
5250-4219	.4219	27/64	1.375	4.00
5250-4220	.4220		1.375	4.00
5250-4230	.4230		1.375	4.00
5250-4240	.4240		1.375	4.00
5250-4250	.4250		1.375	4.00
5250-4260	.4260		1.375	4.00
5250-4270	.4270		1.375	4.00
5250-4280	.4280		1.375	4.00
5250-4290	.4290		1.375	4.00
5250-4300	.4300		1.375	4.00
5250-4310	.4310		1.375	4.00
5250-4320	.4320		1.375	4.00
5250-4330	.4330		1.375	4.00
5250-4331	.4331	11.0mm	1.375	4.00



Neck Diameter
d1 .0400-.0500: *d3* .005 under *d1*
d1 .0510-.5020: *d3* .010 under *d1*

Neck Length
d1 .0400-.0670 – *L3* .250
d1 .0680-.0980 – *L3* .375
d1 .0990-.1590 – *L3* .500
d1 .1600-.2710 – *L3* .625
d1 .2720-.5020 – *L3* .750

Number of flutes
d1 .0400-.2540 - 4 flutes
d1 .2550-.5020 - 6 flutes

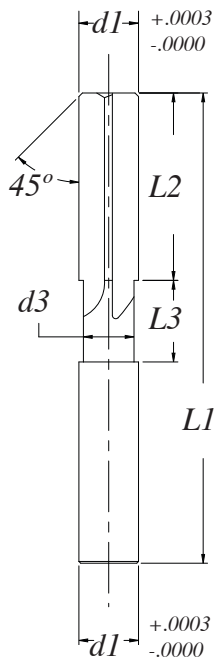


5250 SERIES SOLID CARBIDE REAMERS

Straight flute, RHC

All Series 5250 Reamers are supplied with standard 45 ° chamfer

Series 5250 includes number sizes, letter sizes, fractional sizes, metric sizes and decimal sizes, including over/under sizes

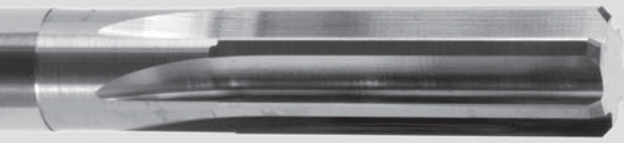


Neck Diameter
d1 .0400-.0500: *d3* .005 under *d1*
d1 .0510-.5020: *d3* .010 under *d1*

Neck Length
d1 .0400-.0670 – *L3* .250
d1 .0680-.0980 – *L3* .375
d1 .0990-.1590 – *L3* .500
d1 .1600-.2710 – *L3* .625
d1 .2720-.5020 – *L3* .750

Number of flutes
d1 .0400-.2540 - 4 flutes
d1 .2550-.5020 - 6 flutes

ORDER #	SIZE	SIZE	LENGTH OF FLUTE	OVER ALL LENGTH
	<i>d1</i>	<i>d1</i>	<i>L2</i>	<i>L1</i>
5250-4340	.4340		1.375	4.00
5250-4350	.4350		1.375	4.00
5250-4355	.4355	D.P.	1.375	4.00
5250-4360	.4360		1.375	4.00
5250-4365	.4365	U.S.	1.375	4.00
5250-4370	.4370	D.P.	1.375	4.00
5250-4375	.4375	7/16	1.375	4.00
5250-4380	.4380		1.375	4.00
5250-4385	.4385	O.S.	1.375	4.00
5250-4390	.4390		1.375	4.00
5250-4400	.4400		1.375	4.00
5250-4410	.4410		1.375	4.00
5250-4420	.4420		1.375	4.00
5250-4430	.4430		1.375	4.00
5250-4440	.4440		1.375	4.00
5250-4450	.4450		1.375	4.00
5250-4460	.4460		1.375	4.00
5250-4470	.4470		1.375	4.00
5250-4480	.4480		1.375	4.00
5250-4490	.4490		1.375	4.00
5250-4500	.4500		1.375	4.00
5250-4510	.4510		1.375	4.00
5250-4520	.4520		1.375	4.00
5250-4527	.4527	11.5mm	1.375	4.00
5250-4530	.4530		1.375	4.00
5250-4531	.4531	29/64	1.375	4.00
5250-4540	.4540		1.375	4.00
5250-4550	.4550		1.375	4.00
5250-4560	.4560		1.375	4.00
5250-4570	.4570		1.375	4.00
5250-4580	.4580		1.375	4.00
5250-4590	.4590		1.375	4.00
5250-4600	.4600		1.375	4.00
5250-4610	.4610		1.375	4.00



REAMER360⁰

cutting tool technologies

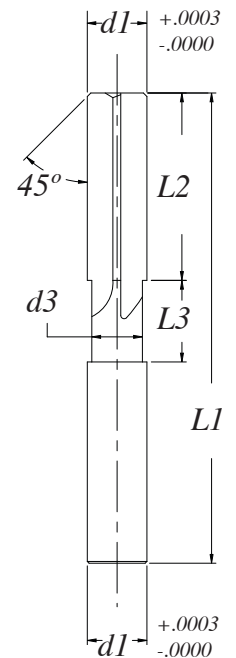
5250 SERIES SOLID CARBIDE REAMERS

Straight flute, RHC

All Series 5250 Reamers are supplied
with standard 45 ° chamfer

Series 5250 includes number sizes, letter sizes, fractional sizes,
metric sizes and decimal sizes, including over/under sizes

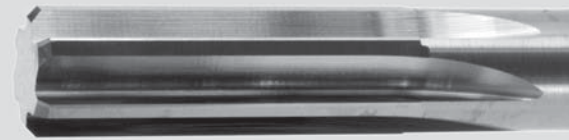
ORDER #	SIZE	SIZE	LENGTH OF FLUTE	OVER ALL LENGTH
	<i>d1</i>	<i>d1</i>	<i>L2</i>	<i>L1</i>
5250-4620	.4620		1.375	4.00
5250-4630	.4630		1.375	4.00
5250-4640	.4640		1.375	4.00
5250-4650	.4650		1.375	4.00
5250-4660	.4660		1.375	4.00
5250-4670	.4670		1.375	4.00
5250-4680	.4680		1.375	4.00
5250-4688	.4688	15/32	1.375	4.00
5250-4690	.4690		1.375	4.00
5250-4700	.4700		1.500	4.00
5250-4710	.4710		1.500	4.00
5250-4720	.4720		1.500	4.00
5250-4724	.4724	12.0mm	1.500	4.00
5250-4730	.4730		1.500	4.00
5250-4740	.4740		1.500	4.00
5250-4750	.4750		1.500	4.00
5250-4760	.4760		1.500	4.00
5250-4770	.4770		1.500	4.00
5250-4780	.4780		1.500	4.00
5250-4790	.4790		1.500	4.00
5250-4800	.4800		1.500	4.00
5250-4810	.4810		1.500	4.00
5250-4820	.4820		1.500	4.00
5250-4830	.4830		1.500	4.00
5250-4840	.4840		1.500	4.00
5250-4844	.4844	31/64	1.500	4.00
5250-4850	.4850		1.500	4.00
5250-4860	.4860		1.500	4.00
5250-4870	.4870		1.500	4.00
5250-4820	.4820		1.500	4.00
5250-4830	.4830		1.500	4.00
5250-4840	.4840		1.500	4.00
5250-4844	.4844	31/64	1.500	4.00
5250-4850	.4850		1.500	4.00



Neck Diameter
d1 .0400-.0500: *d3* .005 under *d1*
d1 .0510-.5020: *d3* .010 under *d1*

Neck Length
d1 .0400-.0670 – *L3* .250
d1 .0680-.0980 – *L3* .375
d1 .0990-.1590 – *L3* .500
d1 .1600-.2710 – *L3* .625
d1 .2720-.5020 – *L3* .750

Number of flutes
d1 .0400-.2540 - 4 flutes
d1 .2550-.5020 - 6 flutes

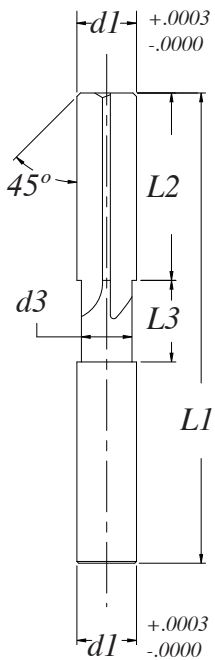


5250 SERIES SOLID CARBIDE REAMERS

Straight flute, RHC

All Series 5250 Reamers are supplied with standard 45 ° chamfer

Series 5250 includes number sizes, letter sizes, fractional sizes, metric sizes and decimal sizes, including over/under sizes



ORDER #	SIZE	SIZE	LENGTH OF FLUTE	OVER ALL LENGTH
	<i>d1</i>	<i>d1</i>	<i>L2</i>	<i>L1</i>
5250-4860	.4860		1.500	4.00
5250-4870	.4870		1.500	4.00
5250-4880	.4880		1.500	4.00
5250-4890	.4890		1.500	4.00
5250-4900	.4900		1.500	4.00
5250-4910	.4910		1.500	4.00
5250-4920	.4920		1.500	4.00
5250-4921	.4921	12.5mm	1.500	4.00
5250-4930	.4930		1.500	4.00
5250-4940	.4940		1.500	4.00
5250-4950	.4950		1.500	4.00
5250-4960	.4960		1.500	4.00
5250-4970	.4970		1.500	4.00
5250-4980	.4980	D.P.	1.500	4.00
5250-4990	.4990	U.S.	1.500	4.00
5250-4995	.4995		1.500	4.00
5250-5000	.5000	1/2	1.500	4.00
5250-5005	.5005		1.500	4.00
5250-5010	.5010	O.S.	1.500	4.00
5250-5020	.5020		1.500	4.00

Neck Diameter

d1 .0400-.0500: *d3* .005 under *d1*
d1 .0510-.5020: *d3* .010 under *d1*

Neck Length

d1 .0400-.0670 – *L3* .250
d1 .0680-.0980 – *L3* .375
d1 .0990-.1590 – *L3* .500
d1 .1600-.2710 – *L3* .625
d1 .2720-.5020 – *L3* .750

Number of flutes

d1 .0400-.2540 - 4 flutes
d1 .2550-.5020 - 6 flutes